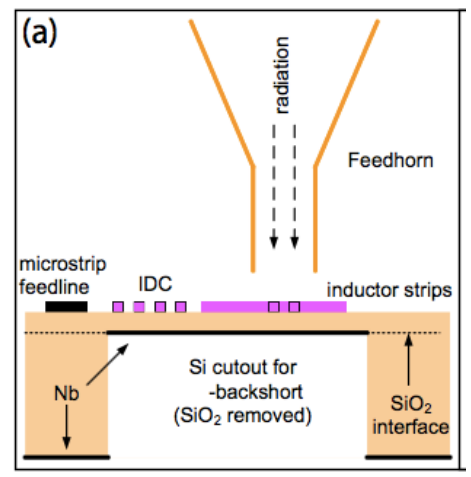
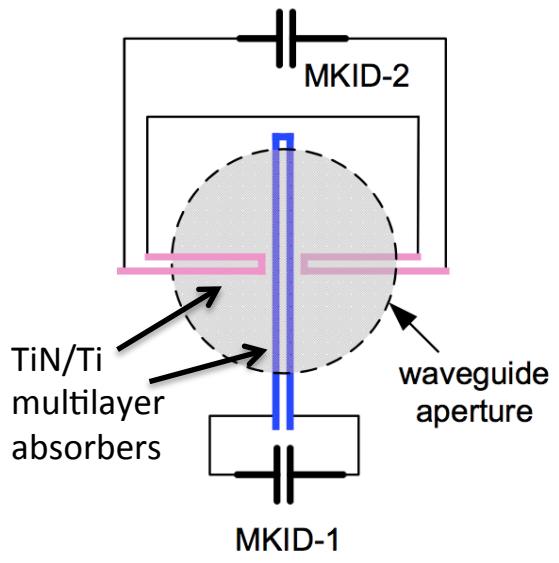


# Scalable Solution with Kinetic Inductance Detectors (NIST/Stanford/BLASTPo1)

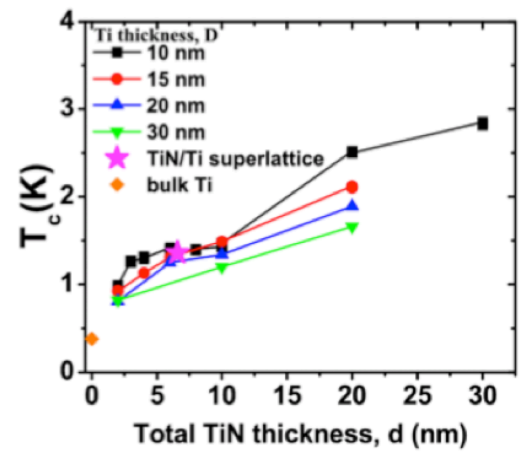
## Feedhorn-coupled MKID



## Dual-polarization

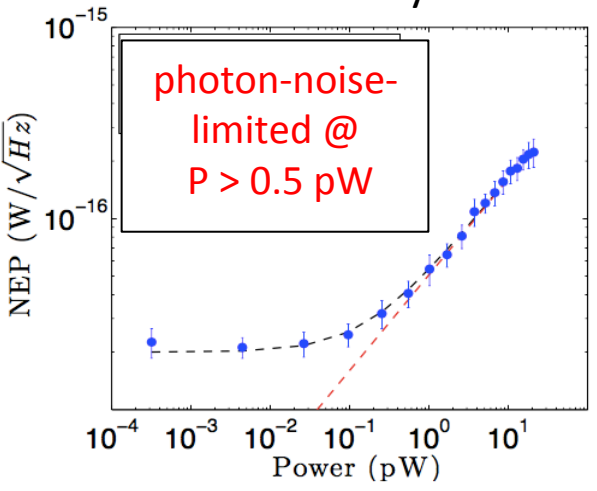


**Tunable  $T_c \rightarrow$  capable of scaling to long wavelengths**



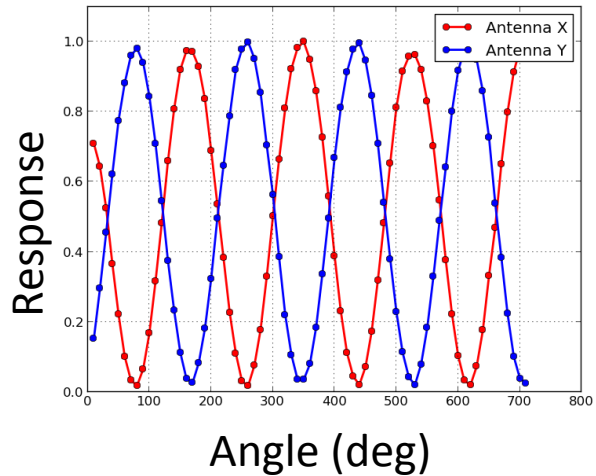
Visers et al. 2013

## Sensitivity



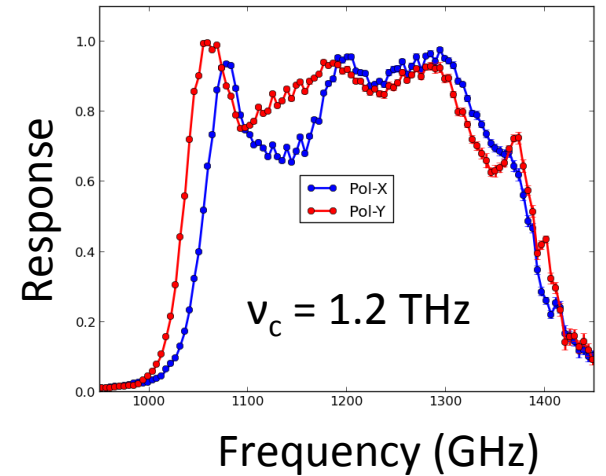
Hubmayr et al. APL **106**, 7 (2015)

## Polarization response



Dober et al. to be submitted to *JLTP*

## Passbands



**Prototype 90 GHz devices expected by year end**